



SIZE

93,337 square feet

DEMOGRAPHICS

	1 mile	3 mile	5 mile
Population	9,088	100,341	270,233
Households	3,759	38,697	102,178
Median HH Income (\$)	104,200	95,893	97,322

MAJOR TENANT(S)

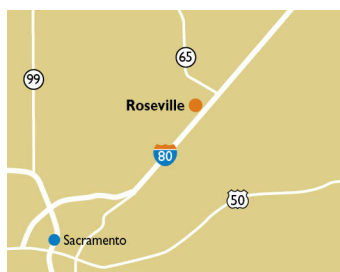
Sprouts Farmers Market
AT&T
Pieology
Starbucks

LEASING CONTACT

Josh O'Toole
Mobile (801) 698-8080
jotoole@phillipsedison.com

MORE INFO

www.phillipsedison.com



LOCATION

2030 Douglas Boulevard | Roseville, CA 95661

PROPERTY HIGHLIGHTS

- Anchored by Sprouts Farmers Market
- Additional national tenants include Starbucks, Orange Theory, BevMo!, Pieology, AT&T, Wells Fargo, Sport Clips and Jersey Mike's
- Population exceeds 100,300 in a three-mile radius with an average household income over \$126,100
- Visit rockyridgetowncenter.com for more information



ROCKY RIDGE TOWN CENTER

2030 Douglas Boulevard | Roseville, CA 95661

SPACE	TENANT	SQ. FT.		
SHAD1	Wells Fargo		0030	Pieology 2,733 SF
004	Dos Coyotes Border Cafe	3,739 SF	0032	BevMo! 10,315 SF
005	COMING AVAILABLE	892 SF	0035	Lavish Locks Hair Extension Bar 1,661 SF
009	Sprouts Farmers Market	27,650 SF	0036	Cosmo Nail Lounge 1,447 SF
0012	Starbucks	1,394 SF	0037	Interdental Care 1,556 SF
0014	Noah's New York Bagels	1,796 SF	0038	Yoga Six 2,013 SF
0016	Tea Spoon Life	1,320 SF	0039	Orangetheory Fitness 2,998 SF
0018	Jersey Mike's Subs	1,281 SF	0040	European Wax Center 2,100 SF
0020	Blue House Korean BBQ	2,723 SF	0042 COMING AVAILABLE	2,400 SF
0024	Jamba Juice	1,419 SF	0044	Sport Clips 1,190 SF
0025	Learning Express Toys	2,584 SF	0045	Adam's Jewelers 1,200 SF
0026	Petroglyph	2,387 SF	0047	Uptown Cheapskate 3,137 SF
0028	Buck & Sadie's Angus Burgers & Wings	2,899 SF	0048	AT&T 3,175 SF
			0049	Romano's Macaroni Grill 7,328 SF
			TOTAL SQ. FT.	93,337

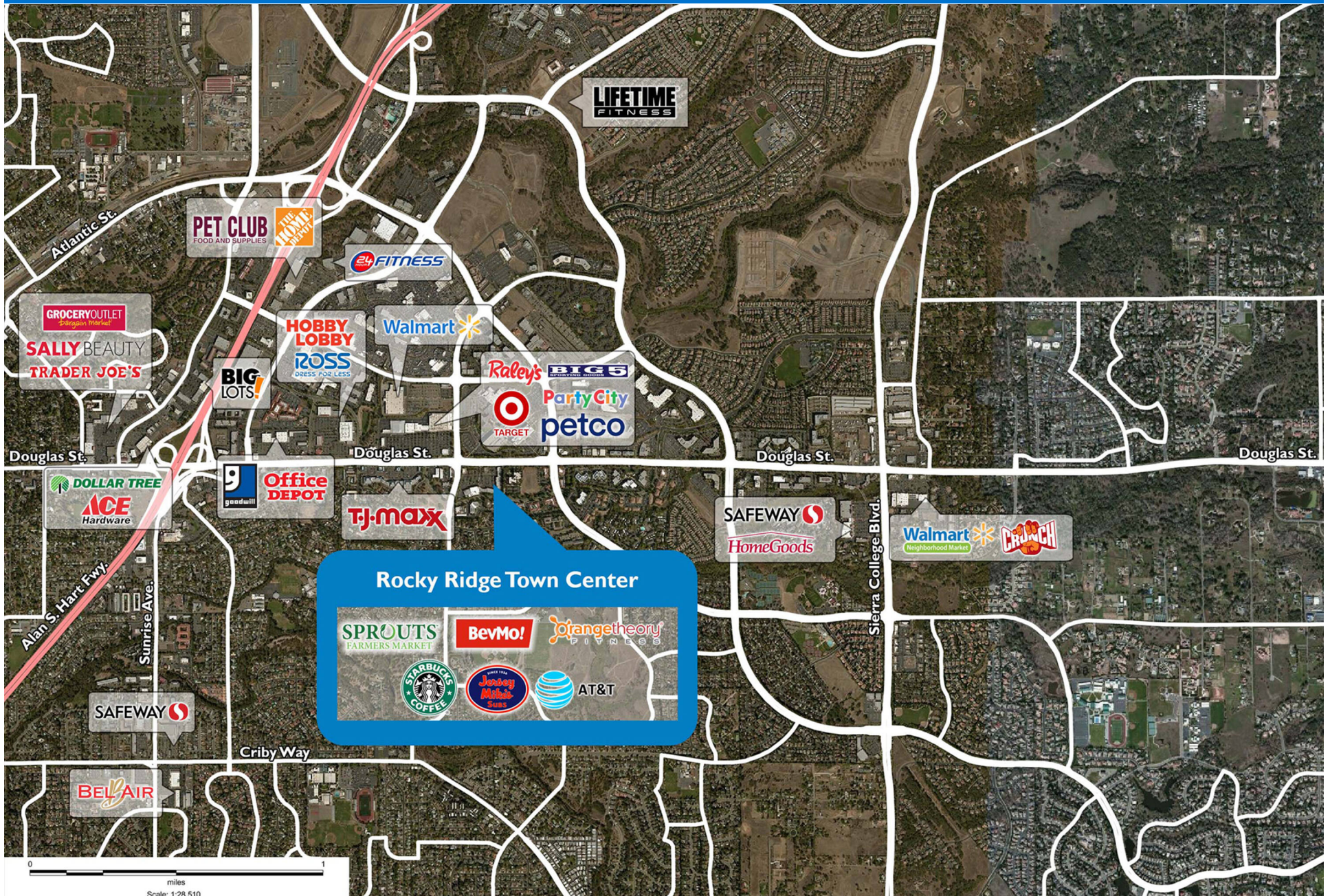
SITE LEGEND	
 Available	 Occupied
 Leased (not occupied)	 Owned by Others
 Site Boundary	



DISCLAIMER - This site plan is for general information purposes only and is not intended to constitute representations and warranties by Landlord as to the ownership of the real property depicted herein or the identity or nature of any occupants thereof.

ROCKY RIDGE TOWN CENTER

2030 Douglas Boulevard | Roseville, CA 95661



Demographic Summary Report

1990 - 2000 Census, 2023 Estimates & 2028 Projections

Calculated using TAS Retrieval Retrieval

Apr 17, 2024



Latitude: 38.742776

Longitude: -121.252048

Rocky Ridge Town Center Roseville, CA		1.00 Mile Radius	3.00 Mile Radius	5.00 Mile Radius
Population	Q4 2023 Estimated Population	9,088	100,341	270,233
	2028 Projected Population	8,855	99,104	275,672
	2010 Census Population	8,383	92,096	245,852
	2000 Census Population	8,000	83,248	213,227
	1990 Census Population	5,783	66,040	161,655
	Historical Annual Growth 1990 to 2000	3.30%	2.34%	2.81%
	Historical Annual Growth 2000 to 2010	0.47%	1.02%	1.43%
	Estimated Annual Growth 2010 to 2023	0.59%	0.63%	0.69%
	Projected Annual Growth 2023 to 2028	-0.52%	-0.25%	0.40%
	Median Age	42.9	41.9	41.4
Households	Q4 2023 Estimated Households	3,759	38,697	102,178
	2028 Projected Households	3,656	38,146	104,157
	2010 Census Households	3,575	35,458	92,606
	2000 Census Households	3,338	31,382	79,013
	1990 Census Households	2,163	24,312	59,082
	Historical Annual Growth 1990 to 2000	4.43%	2.59%	2.95%
	Historical Annual Growth 2000 to 2010	0.69%	1.23%	1.60%
	Estimated Annual Growth 2010 to 2023	0.37%	0.64%	0.72%
	Projected Annual Growth 2023 to 2028	-0.56%	-0.29%	0.38%
	Population per Household	2.38	2.56	2.62
Population by Race	White	64.0%	66.6%	66.2%
	Black or African American	2.0%	2.0%	2.3%
	Asian & Pacific Islander	7.9%	7.2%	7.8%
	Other Races	8.4%	6.8%	7.1%
	Hispanic Population	17.7%	17.5%	16.6%
Income	Average Household Income	\$129,939	\$126,122	\$125,442
	Median Household Income	\$104,200	\$95,893	\$97,322
	Per Capita Income	\$54,572	\$49,176	\$47,809
Education (Age 25+)	Elementary	1.9%	2.2%	2.1%
	Some High School	3.1%	3.8%	3.9%
	High School Graduate	15.9%	18.5%	19.4%
	Some College	25.5%	26.1%	25.7%
	Associates Degree Only	11.6%	10.4%	11.0%
	Bachelors Degree Only	27.0%	25.5%	25.1%
	Graduate Degree	14.9%	13.5%	12.7%
Business	Number of Businesses	1,973	6,261	11,160
	Total Number of Employees	28,076	79,002	123,166
	Employees per Business	14.23	12.62	11.04
	Residential Population per Business	4.61	16.03	24.21

This report was produced using data from private and government sources deemed to be reliable and is herein provided without representation or warranty.