

ORCHARD SQUARE

WASHINGTON TOWNSHIP, MI



SIZE

92,450 square feet

DEMOGRAPHICS

1 mile	3 mile	5 mile
Population		
1,224	19,303	46,879
Households		
453	7,377	17,690
Median HH Income (\$)		
107,038	100,428	103,384

MAJOR TENANT(S)

Kroger
Pet Supplies Plus
Dollar Tree
Hallmark

LEASING CONTACT

Scott Faloni
Mobile (410) 693-3248
sfaloni@phillipsedison.com

MORE INFO

www.phillipsedison.com



LOCATION

64660-64992 Van Dyke Road | Washington Township, MI 48095

PROPERTY HIGHLIGHTS

- Anchored by Kroger and includes a fuel station; Kroger is the number one grocer by market share in the Detroit area
- Additional national and regional tenants include Hallmark, H&R Block, Dollar Tree, Jet's Pizza, Pet Supplies Plus, and O'Reilly Auto Parts
- Located in Washington Twp., a suburb of Detroit, with a population exceeding 19,300 in a three-mile radius with an average household income greater than \$120,100
- The center is located at the intersection of Van Dyke Road and 30 Mile Road which benefits from over 18,500 vehicles per day



PHILLIPS EDISON & COMPANY®

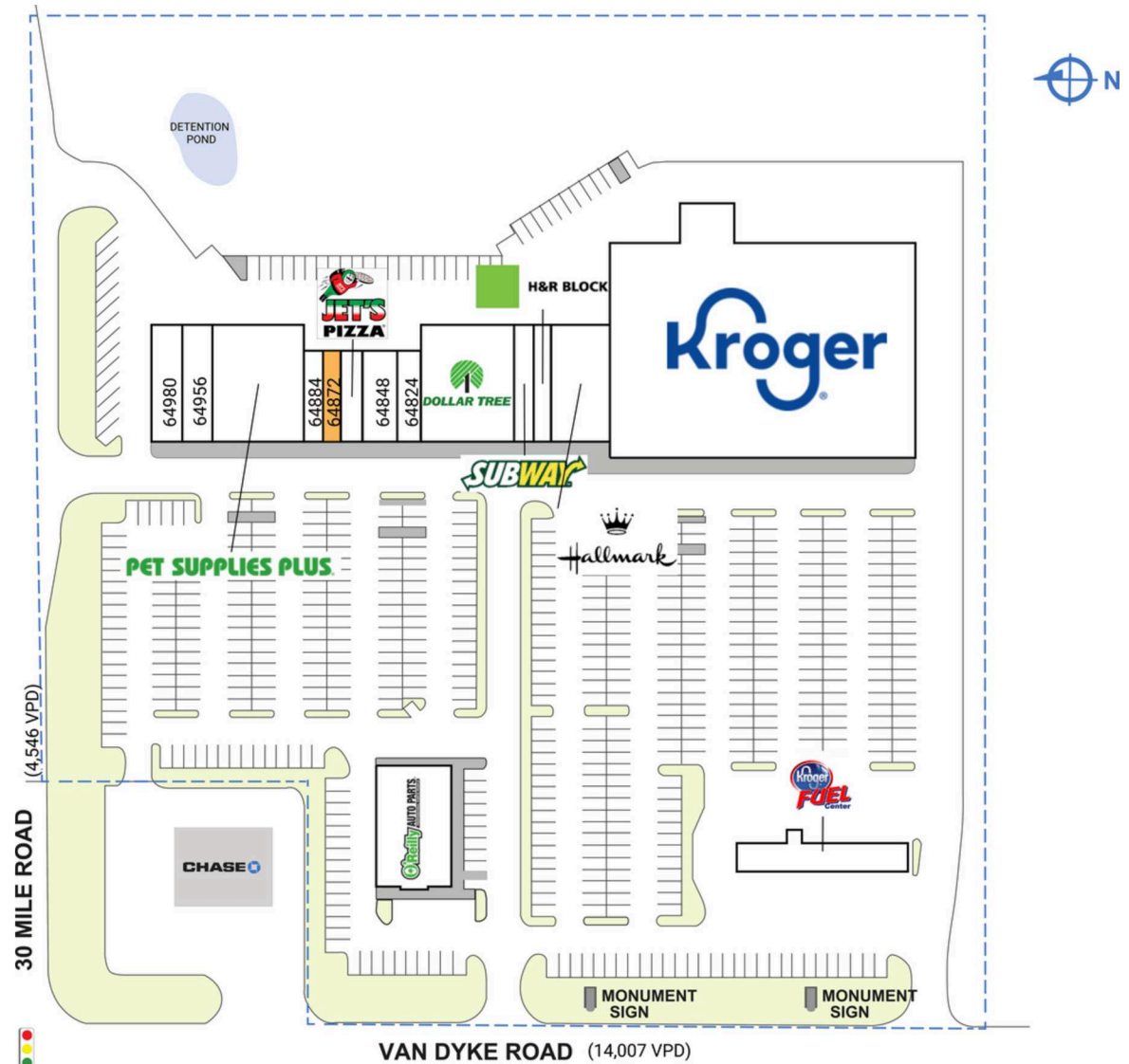
ORCHARD SQUARE

64660-64992 Van Dyke Road | Washington Township, MI 48095

SPACE	TENANT	SQ. FT.
OUT1	Kroger Fuel	
64660	Kroger	48,750 SF
64716	Hallmark	5,000 SF
64740	H&R Block	1,500 SF
64752	Subway	1,500 SF
64788	Dollar Tree	8,000 SF
64820	O'Reilly Auto Parts	6,656 SF
64824	Pro Nails	1,544 SF
64848	Wild Bill's Tobacco	2,480 SF
64860	Jet's Pizza	1,440 SF
64872	AVAILABLE	1,200 SF
64884	Grondin's	1,280 SF
64920	Pet Supplies Plus	8,000 SF
64956	Stone House Grill Mediterranean	2,600 SF
64980	Faithful Friends Veterinary Clinic	2,500 SF
TOTAL SQ. FT.		92,450

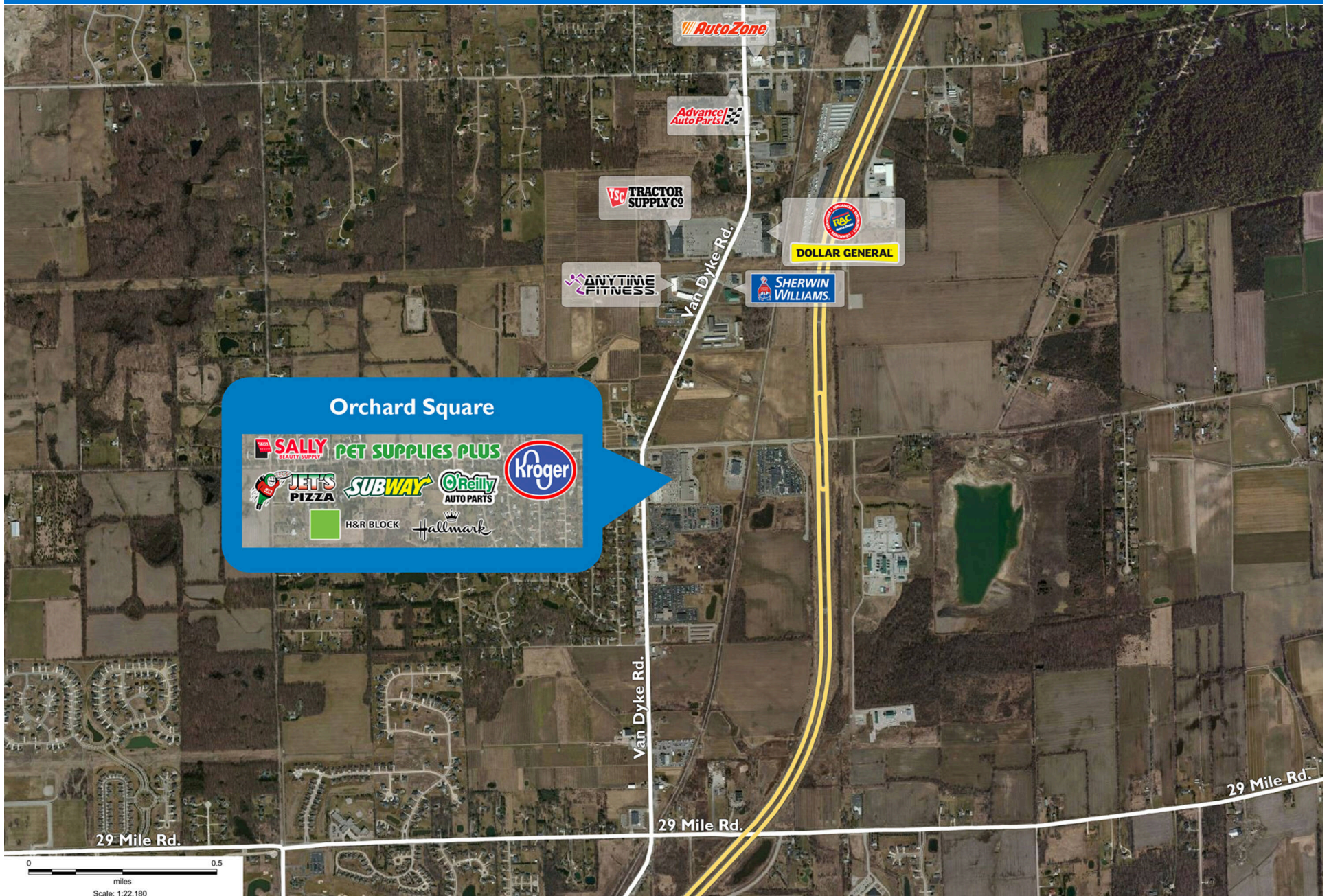
SITE LEGEND

 Available	 Occupied
 Leased (not occupied)	 Owned by Others
 Site Boundary	



ORCHARD SQUARE

64660-64992 Van Dyke Road | Washington Township, MI 48095



Demographic Summary Report

1990 - 2000 Census, 2023 Estimates & 2028 Projections

Calculated using TAS Retrieval Retrieval

Apr 17, 2024



Latitude: 42.771068

Longitude: -83.01628

Orchard Square Washington, MI		1.00 Mile Radius	3.00 Mile Radius	5.00 Mile Radius
Population	Q4 2023 Estimated Population	1,224	19,303	46,879
	2028 Projected Population	1,279	20,539	50,051
	2010 Census Population	1,022	16,644	40,172
	2000 Census Population	734	12,939	30,851
	1990 Census Population	678	10,698	21,660
	Historical Annual Growth 1990 to 2000	0.79%	1.92%	3.60%
	Historical Annual Growth 2000 to 2010	3.37%	2.55%	2.68%
	Estimated Annual Growth 2010 to 2023	1.32%	1.08%	1.13%
	Projected Annual Growth 2023 to 2028	0.88%	1.25%	1.32%
	Median Age	45.5	45.8	44.6
Households	Q4 2023 Estimated Households	453	7,377	17,690
	2028 Projected Households	473	7,854	18,895
	2010 Census Households	382	6,264	14,725
	2000 Census Households	255	4,724	11,183
	1990 Census Households	230	3,633	7,307
	Historical Annual Growth 1990 to 2000	1.07%	2.66%	4.35%
	Historical Annual Growth 2000 to 2010	4.11%	2.86%	2.79%
	Estimated Annual Growth 2010 to 2023	1.25%	1.20%	1.34%
	Projected Annual Growth 2023 to 2028	0.88%	1.26%	1.33%
	Population per Household	2.68	2.60	2.64
Population by Race	White	92.3%	90.0%	89.3%
	Black or African American	0.8%	1.7%	1.6%
	Asian & Pacific Islander	2.3%	1.0%	1.2%
	Other Races	2.5%	3.1%	3.2%
	Hispanic Population	2.2%	4.2%	4.6%
Income	Average Household Income	\$132,058	\$120,163	\$126,455
	Median Household Income	\$107,038	\$100,428	\$103,384
	Per Capita Income	\$49,240	\$46,198	\$47,877
Education (Age 25+)	Elementary	1.1%	3.5%	3.0%
	Some High School	1.1%	3.8%	3.9%
	High School Graduate	25.2%	25.6%	24.4%
	Some College	30.7%	23.3%	21.4%
	Associates Degree Only	11.1%	8.8%	10.1%
	Bachelors Degree Only	16.2%	22.8%	22.7%
	Graduate Degree	14.6%	12.2%	14.5%
Business	Number of Businesses	61	467	838
	Total Number of Employees	485	4,758	8,445
	Employees per Business	7.90	10.19	10.08
	Residential Population per Business	19.92	41.35	55.94

This report was produced using data from private and government sources deemed to be reliable and is herein provided without representation or warranty.