



## SIZE

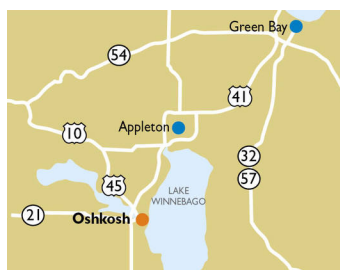
85,523 square feet

## DEMOGRAPHICS

	1 mile	3 mile	5 mile
<b>Population</b>	13,463	55,531	76,572
<b>Households</b>	5,718	21,546	30,064
<b>Median HH Income (\$)</b>	52,782	54,088	59,282

## MAJOR TENANT(S)

Pick 'n Save  
Starbucks



## LOCATION

1900 Jackson Street | Oshkosh, WI 54901

## PROPERTY HIGHLIGHTS

- Anchored by Pick 'n Save, the top grocer by market share in the area, and the only grocery-anchored shopping center north of the river
- National tenants include Subway, Pizza Hut and Starbucks
- Located at the intersection of Jackson Street and Murdock Avenue benefitting from the daily traffic of over 16,300 and 11,100 vehicles respectively
- Major Oshkosh-based employers include Oshkosh Corporation, Bemis Companies and U.S. Bank
- The University of Wisconsin Oshkosh, the state's third-largest university and Oshkosh's third-largest employer, is less than two miles south of the center
- Services a population greater than 55,500 in a three-mile radius

## LEASING CONTACT

Andrew Schrage  
Mobile (317) 508-8119  
aschrage@phillipsedison.com



## MORE INFO

www.phillipsedison.com



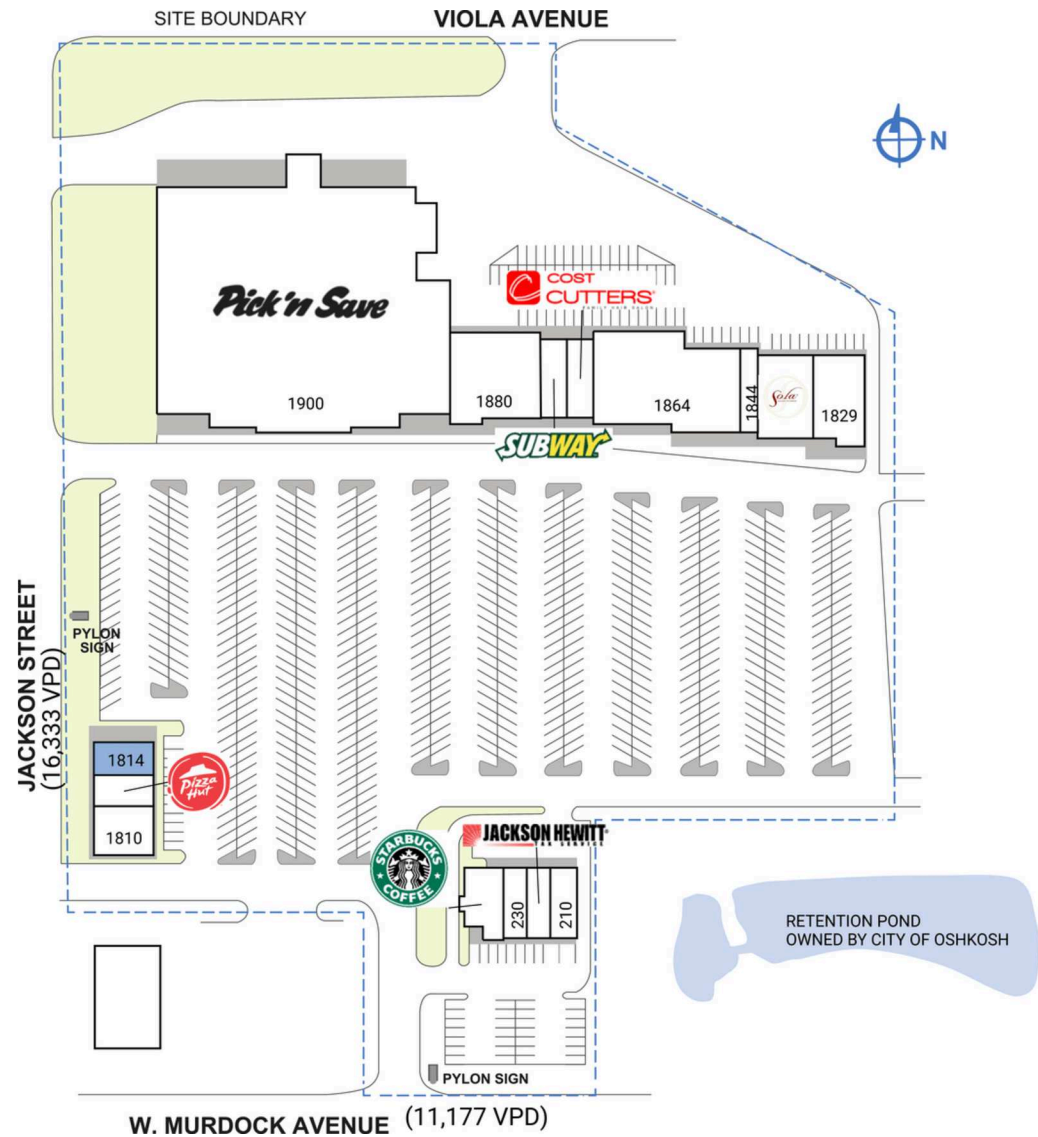
# FAIRACRES SHOPPING CENTER

1900 Jackson Street | Oshkosh, WI 54901

SPACE	TENANT	SQ. FT.
210	The Cash Store	1,435 SF
220	Jackson Hewitt	1,240 SF
230	US Cellular	1,271 SF
240	Starbucks	1,953 SF
1810	Shopko Optical	2,000 SF
1812	Pizza Hut	1,410 SF
<b>1814</b>	<b>COMING AVAILABLE</b>	<b>1,790 SF</b>
1828	Sola Salon Studios	4,392 SF
1829	Home Town Pharmacy	2,508 SF
1844	California Nails	759 SF
1864	O-Town Iron	10,604 SF
1868	Cost Cutters	1,300 SF
1872	Subway	1,300 SF
1880	Pick 'n Save Liquor	5,561 SF
1900	Pick 'n Save	48,000 SF
<b>TOTAL SQ. FT.</b>		<b>85,523</b>

SITE LEGEND	
<span style="display: inline-block; width: 15px; height: 15px; background-color: #f4a460; border: 1px solid black;"></span> Available	<span style="display: inline-block; width: 15px; height: 15px; background-color: #d3d3d3; border: 1px solid black;"></span> Occupied
<span style="display: inline-block; width: 15px; height: 15px; background-color: #4682b4; border: 1px solid black;"></span> Leased (not occupied)	<span style="display: inline-block; width: 15px; height: 15px; background-color: #808080; border: 1px solid black;"></span> Owned by Others
<span style="border: 1px dashed blue; display: inline-block; width: 15px; height: 15px;"></span> Site Boundary	



DISCLAIMER - This site plan is for general information purposes only and is not intended to constitute representations and warranties by Landlord as to the ownership of the real property depicted herein or the identity or nature of any occupants thereof.



# FAIRACRES SHOPPING CENTER

1900 Jackson Street | Oshkosh, WI 54901





# Demographic Summary Report

1990 - 2000 Census, 2022 Estimates & 2027 Projections

Calculated using TAS Retrieval Retrieval

Mar 20, 2023



Fairacres Shopping Center Oshkosh, WA		1.00 Mile Radius	3.00 Mile Radius	5.00 Mile Radius
Population	Q2 2022 Estimated Population	13,463	55,531	76,572
	2027 Projected Population	13,595	55,993	77,616
	2010 Census Population	13,287	55,016	75,416
	2000 Census Population	14,078	53,930	72,464
	1990 Census Population	14,211	51,232	64,139
	Historical Annual Growth 1990 to 2000	-0.09%	0.51%	1.23%
	Historical Annual Growth 2000 to 2010	-0.58%	0.20%	0.40%
	Estimated Annual Growth 2010 to 2022	0.10%	0.07%	0.12%
	Projected Annual Growth 2022 to 2027	0.20%	0.17%	0.27%
	Median Age	36.7	35.8	37.4
Households	Q2 2022 Estimated Households	5,718	21,546	30,064
	2027 Projected Households	5,774	21,741	30,485
	2010 Census Households	5,643	21,331	29,614
	2000 Census Households	5,486	20,329	27,481
	1990 Census Households	5,171	19,238	24,056
	Historical Annual Growth 1990 to 2000	0.59%	0.55%	1.34%
	Historical Annual Growth 2000 to 2010	0.28%	0.48%	0.75%
	Estimated Annual Growth 2010 to 2022	0.10%	0.08%	0.12%
	Projected Annual Growth 2022 to 2027	0.19%	0.18%	0.28%
	Population per Household	2.28	2.25	2.30
Population by Race	White	86.3%	86.0%	87.7%
	Black or African American	3.0%	4.0%	3.3%
	Asian & Pacific Islander	4.3%	3.4%	3.4%
	Other Races	2.9%	2.9%	2.6%
	Hispanic Population	3.6%	3.6%	3.0%
Income	Average Household Income	\$63,629	\$65,218	\$73,435
	Median Household Income	\$52,782	\$54,088	\$59,282
	Per Capita Income	\$27,482	\$26,531	\$29,795
Education (Age 25+)	Elementary	5.7%	3.0%	2.2%
	Some High School	5.1%	6.3%	6.0%
	High School Graduate	30.7%	34.1%	32.1%
	Some College	19.8%	21.3%	20.1%
	Associates Degree Only	11.1%	10.1%	10.0%
	Bachelors Degree Only	18.3%	17.8%	20.4%
	Graduate Degree	9.3%	7.3%	9.2%
Business	Number of Businesses	267	1,363	1,922
	Total Number of Employees	5,508	27,523	38,248
	Employees per Business	20.63	20.19	19.90
	Residential Population per Business	50.43	40.73	39.83

This report was produced using data from private and government sources deemed to be reliable and is herein provided without representation or warranty.