



SIZE

71,210 square feet

DEMOGRAPHICS

1 mile	3 mile	5 mile
<b>Population</b>		
2,562	17,317	48,770
<b>Households</b>		
940	6,266	18,279
<b>Median HH Income (\$)</b>		
162,155	156,781	149,365

MAJOR TENANT(S)

Shaw's Supermarket  
Walgreens



LOCATION

739 Chief Justice Cushing Highway | Cohasset, MA 02025

PROPERTY HIGHLIGHTS

- Anchored by Shaw's, a subsidiary of Albertsons
- Additional national and regional tenants include Walgreens, Rockland Trust Bank and The UPS Store
- Located in Cohasset, Massachusetts with a population exceeding 17,300 in a three-mile radius with an average household income greater than \$226,500
- The center is located on Route 3A which benefits from over 15,700 vehicles per day

LEASING CONTACT

Marissa Visconi  
Mobile (303) 547-4386  
mvisconi@phillipsedison.com



MORE INFO

www.phillipsedison.com



# CUSHING PLAZA

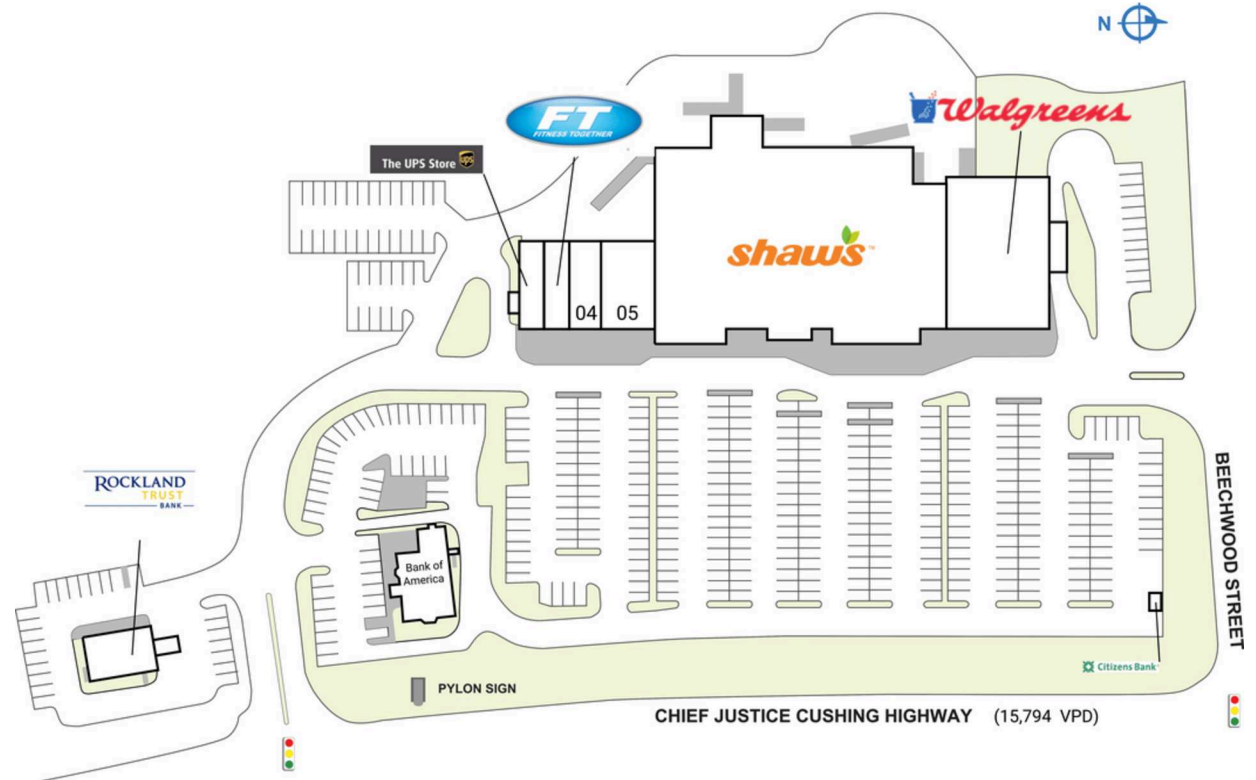
739 Chief Justice Cushing Highway | Cohasset, MA 02025

SPACE	TENANT	SQ. FT.
ATM2	Citizens Bank	
PAD	Bank of America	
01	Rockland Trust Company	2,400 SF
02	The UPS Store	1,490 SF
03	Fitness Together	1,598 SF
04	Jogi's Liquor	2,397 SF
05	Buttonwood Books	4,150 SF
06	Shaw's Supermarket	45,675 SF
07	Walgreens	13,500 SF
<b>TOTAL SQ. FT.</b>		<b>71,210</b>

**SITE LEGEND**

<span style="display:inline-block; width:15px; height:15px; background-color:orange; border:1px solid black;"></span> Available	<span style="display:inline-block; width:15px; height:15px; background-color:white; border:1px solid black;"></span> Occupied
<span style="display:inline-block; width:15px; height:15px; background-color:blue; border:1px solid black;"></span> Leased (not occupied)	<span style="display:inline-block; width:15px; height:15px; background-color:gray; border:1px solid black;"></span> Owned by Others
<span style="display:inline-block; width:15px; height:15px; border:2px dashed blue;"></span> Site Boundary	



DISCLAIMER - This site plan is for general information purposes only and is not intended to constitute representations and warranties by Landlord as to the ownership of the real property depicted herein or the identity or nature of any occupants thereof.



# CUSHING PLAZA

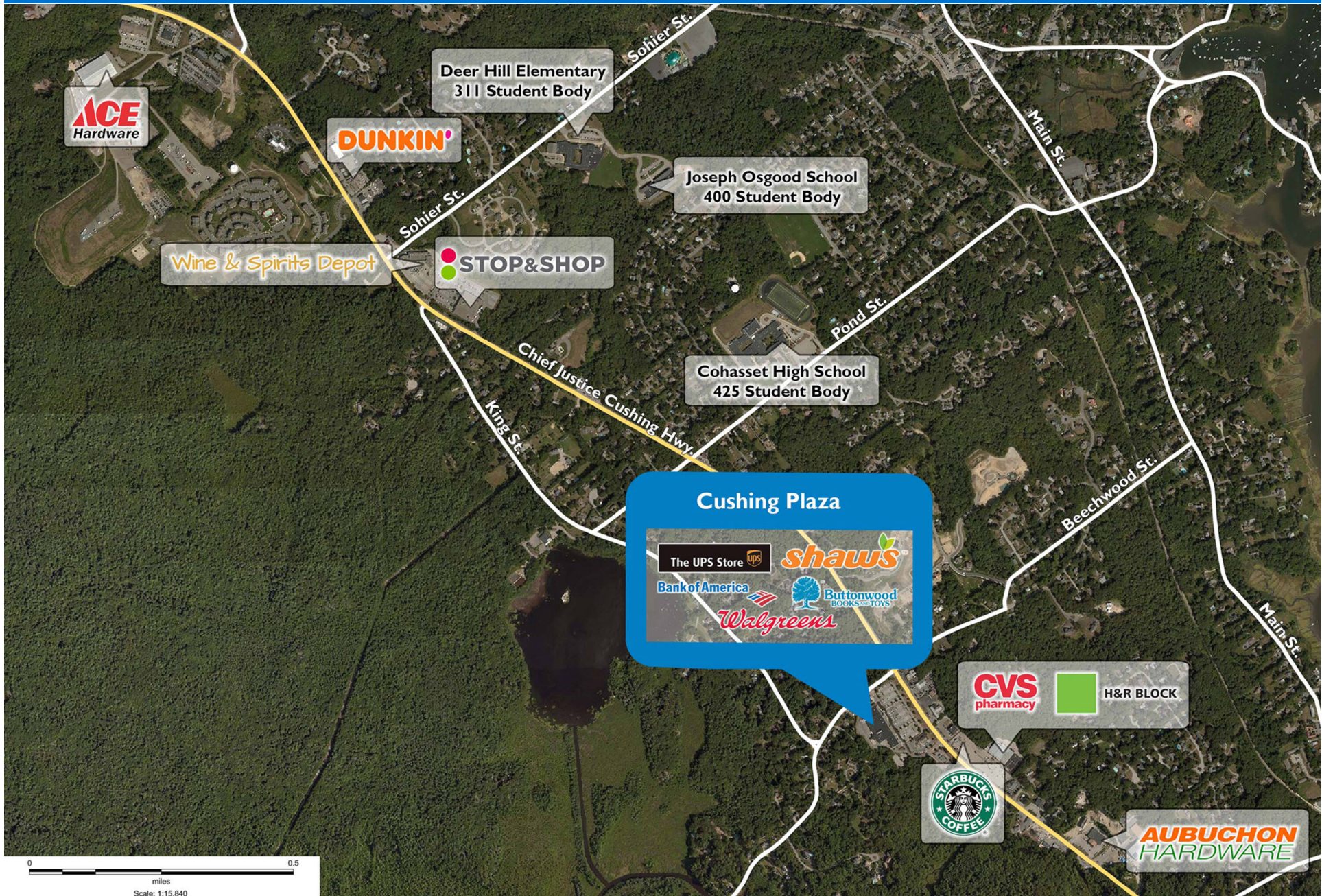
739 Chief Justice Cushing Highway | Cohasset, MA 02025





# CUSHING PLAZA

739 Chief Justice Cushing Highway | Cohasset, MA 02025





# Demographic Summary Report

1990 - 2000 Census, 2022 Estimates & 2027 Projections

Calculated using TAS Retrieval Retrieval

Mar 20, 2023



Cushing Plaza Cohasset, MA		1.00 Mile Radius	3.00 Mile Radius	5.00 Mile Radius
Population	Q2 2022 Estimated Population	2,562	17,317	48,770
	2027 Projected Population	2,635	17,593	49,325
	2010 Census Population	2,237	15,949	45,480
	2000 Census Population	2,112	15,505	43,537
	1990 Census Population	2,091	14,719	41,900
	Historical Annual Growth 1990 to 2000	0.10%	0.52%	0.38%
	Historical Annual Growth 2000 to 2010	0.58%	0.28%	0.44%
	Estimated Annual Growth 2010 to 2022	1.07%	0.65%	0.55%
	Projected Annual Growth 2022 to 2027	0.57%	0.32%	0.23%
	Median Age	48.0	47.9	48.4
Households	Q2 2022 Estimated Households	940	6,266	18,279
	2027 Projected Households	969	6,371	18,483
	2010 Census Households	816	5,750	17,022
	2000 Census Households	798	5,639	16,015
	1990 Census Households	731	5,252	14,817
	Historical Annual Growth 1990 to 2000	0.88%	0.71%	0.78%
	Historical Annual Growth 2000 to 2010	0.22%	0.20%	0.61%
	Estimated Annual Growth 2010 to 2022	1.12%	0.68%	0.56%
	Projected Annual Growth 2022 to 2027	0.60%	0.33%	0.22%
	Population per Household	2.70	2.75	2.65
Population by Race	White	93.9%	94.3%	94.0%
	Black or African American	0.7%	0.4%	0.4%
	Asian & Pacific Islander	1.7%	1.7%	1.5%
	Other Races	2.8%	2.3%	2.6%
	Hispanic Population	1.0%	1.3%	1.5%
Income	Average Household Income	\$212,610	\$226,530	\$212,300
	Median Household Income	\$162,155	\$156,781	\$149,365
	Per Capita Income	\$78,670	\$82,382	\$80,098
Education (Age 25+)	Elementary	0.7%	0.7%	1.0%
	Some High School	1.1%	1.0%	1.4%
	High School Graduate	6.9%	10.0%	12.1%
	Some College	9.1%	9.7%	10.4%
	Associates Degree Only	8.5%	7.1%	7.9%
	Bachelors Degree Only	39.2%	39.5%	37.3%
	Graduate Degree	34.5%	32.0%	30.1%
Business	Number of Businesses	127	408	1,316
	Total Number of Employees	1,265	4,197	14,443
	Employees per Business	9.96	10.28	10.98
	Residential Population per Business	20.17	42.43	37.07

This report was produced using data from private and government sources deemed to be reliable and is herein provided without representation or warranty.